

Scaling the Peer Review Process

Gerry Hanley
Flora McMartin
MERLOT

NSDL All Projects Meeting
October 13-15, 2003
Washington DC

MERLOT Metrics



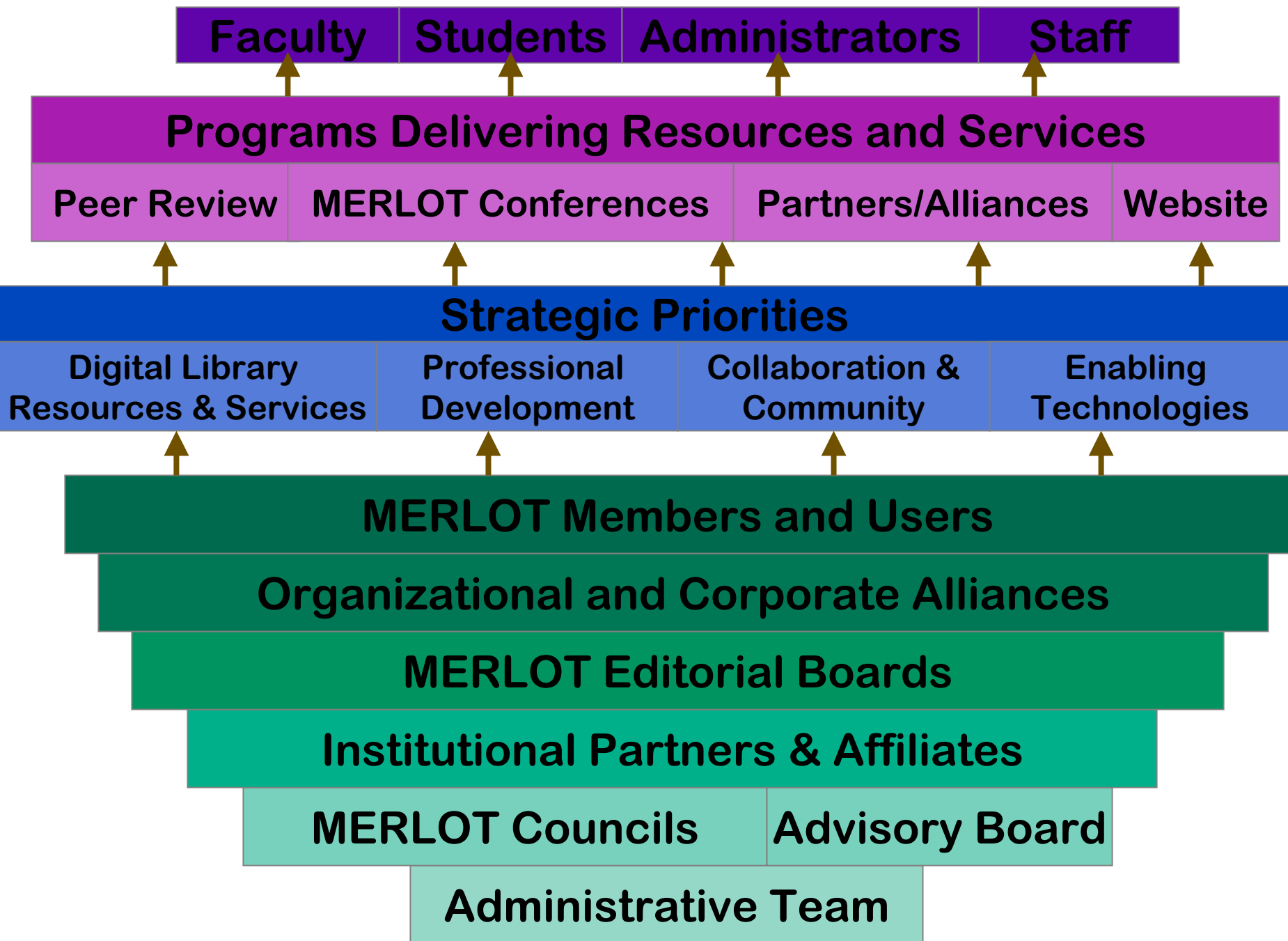
USAGE	Dec 2001	Dec 2002	July 2003
Hits per month	710,216	1,310,526	1,512,463
Average # of Unique Users/month	9,579	13,985	15,216
Average # of Users/month	N/A	18,742	21,643
COLLECTION			
# of Materials-With Editorial Boards	5,638	7,440	8,301
# of Materials- W/out Editorial Boards	1,119	1,397	1,286*
# of Peer Reviews	296	789	987
# of Materials with Member Comments	1,485	1,904	1,855*
# of Personal Collections	N/A	N/A	351

* = Significant curation of collection to less than 1% dead links

MERLOT's People Metrics



MEMBERSHIP	Dec 2001	Dec 2002	July 2003
Students	959	1,994	2,569
Faculty	3,774	6,621	8,965
Staff	1,003	1,677	2,107
Other	651	1,069	1,428
TOTAL # of Members	6,387	11,561	15,069 30% Increase in 7 months



Supporting Faculty Preparing Curriculum



Enabling Technologies & Digital Library Services

- Searching to find more resources faster
 - Federated Searching
 - Software tuning
- Evaluating more resources more reliably
 - Peer Reviewer Tutorial
- Organizing your chosen resources more personally
 - Personal Collections
- Integrating MERLOT services into your website
 - RSS: Really Simply Summaries/Reliable Syndication Service

MERLOT's Organizational Partners and Affiliates



Digital Library Services	Activity
Education.au Limited SMETE.org American Assoc of Physics Teachers	Federated Search
NEEDS (Engineering) HEAL (Heal Science) CAUSE (Statistics) Journal of Chemical Education*	Peer Review
Professional Development	
New Media Consortium NLII/EDUCAUSE POD*	Professional Development
Enabling Technologies	
IMS (Affiliate)	Standards

NSDL Proposal - Year 2000

Framework For Maturing the Peer Review Process

ACTIVITY	PEOPLE
Form review teams Train review teams	CSU-CDL and the States
Develop standards	CSU-CDL, the States, and Faculty Teams
Produce reviews	Faculty Review Teams
Assess review process	CUDA
Host peer reviews on MERLOT	CSU-CDL

ACTIVITY	PEOPLE
Form review teams Train review teams	CSU-CDL, and professional organizations
Develop standards	CSU-CDL, prof. orgs., and Faculty Teams
Produce reviews	Faculty Review Teams
Assess review process	CUDA
Host peer reviews on MERLOT	CSU-CDL

ACTIVITY	PEOPLE
Form review teams Train review teams	Professional Organizations
Develop standards	Professional Organizations, Faculty Teams
Produce reviews	Faculty Review Teams
Assess review process	Prof. Org, CUDA
Host peer reviews on MERLOT	CSU-CDL

PHASE I:
CSU-CDL and state institutions of higher education manage the peer review process

PHASE II:
MERLOT collaborates to transition the peer review process to professional organizations

PHASE III:
Professional orgs. lead and manage peer review process. CSU and CUDA support

Scaling Peer Review



Key Components of MERLOT's Process

- Evaluation Standards
- Management of Peer Review Process
- Recruitment of Reviewers
- Training of Reviewers
- Assessing Reviews
- Hosting Reviews

Each component process has matured to become more scalable.

Evaluation Standards: Maturing from Concepts to Practice



- **1999 – Published principles**
- **2000 – Operationalized into criteria by Editorial Boards**
- **2001 – Evaluation standards put into practice**
- **2002 – Content analysis of published reviews to evaluate reliability, emerging best practices, and validity of peer review reports**
- **2003 - Revised principles for content and format of evaluation standards to improve reliability and validity of peer reviews reports**

Managing Peer Review Requires Tools



- **2000 – Editors use personal spreadsheets to track:**
 - Materials reviewed
 - Stage of review
 - Assignment of reviewers
- **2001 – Recognized problems of not sharing tools**
- **2002 – MERLOT deployed Peer Review Management Tool (PRMT Workspace)**
- **2003 – Version 2.0 of PRMT to be deployed with improved tracking, managing, and reporting capabilities**

Recruiting and Sponsoring Reviewers



- **2000 – Institutional Partners each sponsored 6-8 faculty to be peer reviewers on discipline teams**
- **2001 – Presentations to professional societies recruited interested faculty volunteers to add to discipline teams**
- **2002 – Formal alliances with professional societies begin with plans to coordinate recognition of volunteer reviewers on Editorial Boards**
- **2003 – Establish hierarchy within Editorial Boards**
 - Editor, Associate Editors: Sponsored by Institutional Partners
 - Assistant Editors and Peer Reviewers: Volunteers managed by Editor/Associate Editor

Training to Produce Integrity in Peer Reviews



- **2000 – Face-to-face training on defining and applying evaluation standards and writing peer review reports. Listservs, threaded discussions, and community site used to support learning**
- **2001 – Mentoring added to face-to-face training and e-communications**
- **2002 – Monthly conference calls added to face-to-face training, e-communications, mentoring**
- **2003 – Tutorial prototyped to provide initial training for defining, learning and practicing writing quality peer review reports**

- **CSU Long Beach Center for Usability in Design and Assessment (CUDA) continues to provide evaluation services**
- **www.merlot.org continues to host the peer review reports and peer review management tool.**
- **Complementary evaluation methods**
 - Member Comments
 - Citation Index in Personal Collections