



SIO Explorer NSDL as a Catalyst for other Projects



1. Initial NSDL Collections Track Award

Initiate the collaboration

Librarians
Researchers
Computer Scientists



Floating Digital Library Workshop
New Zealand to Samoa, 2002

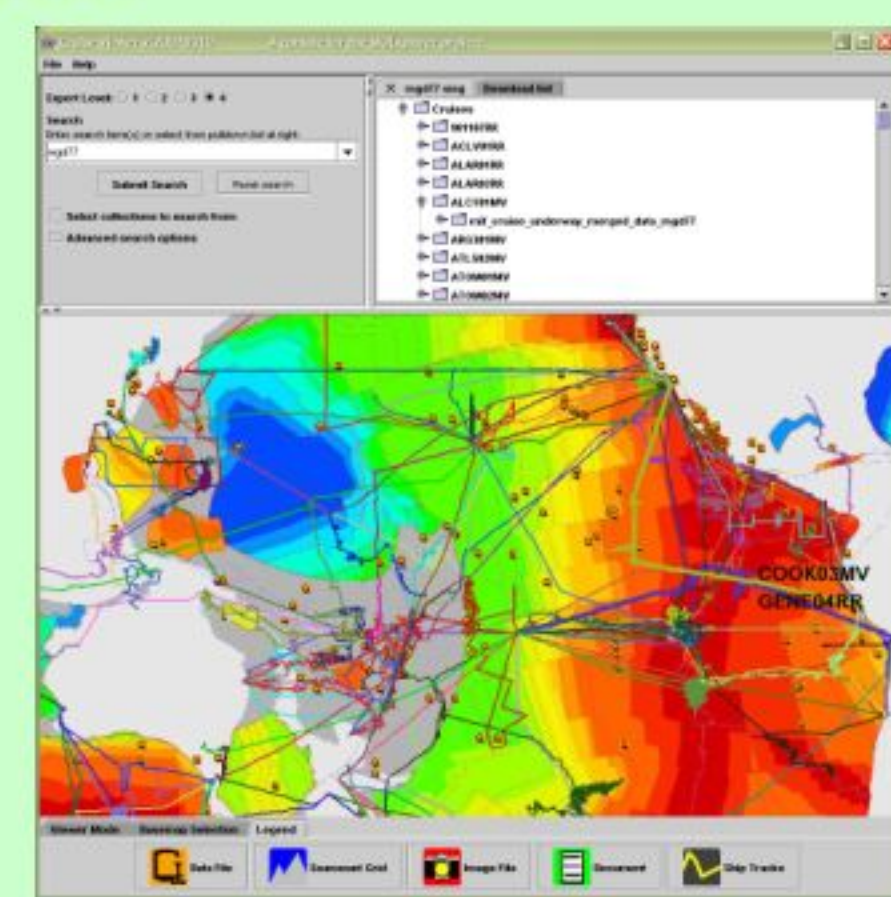
Build first 3 collections

Scalable digital library architecture
150,000 objects, 500 GB

NSDL 01-21684 Bridging the Gap
Between Libraries and Data Archives

2. ITR open access to shipboard archives

Auto-harvesting data and metadata



ITR 01-13999 SIO Explorer:
Web Exploration of Seagoing Archives

3. OCE Multibeam Search and Rescue

“No Data Left Behind” policy



Preserve endangered species at-risk digital media



OCE 02-20942 Multibeam Database:
Search and Rescue

4. NSDL ERESE Teachers Workshops

Extend the collaboration
Teachers
Students

(see companion posters)

NSDL 03-33705 Mobilizing Enduring NSDL Resources in Plate Tectonics Research for Earth Science Education

5. OCE integrate large-scale physical collections

3500 rock dredges
6600 sediment cores




OCE 03-51961 Marine Geological Collections:
Scripps Institution of Oceanography

6. ATM Marine Metadata Interoperability

Community clearinghouse
Metadata technology content
controlled vocabularies

Lead institution:
Monterey Bay Aquarium Research Institute (MBARI)
<http://marinemetadata.org>
ATM 04-47031 Marine Metadata Interoperability



Leverage initial NSDL effort

Related initiatives

Interoperability Design Challenge
Workshops at SDSC and LDEO
CCOMexplorer at UNH
MBARlexplorer
WHOlexplorer
NIWAexplorer
HAWAIIexplorer
CUAHSI <http://cuahsi.sdsc.edu/HIS/>
Director's Cyberinfrastructure MOU
SIO/SDSC/LDEO/WHOI
SIO Teachers-at-Sea
Informal Education Outreach through Birch Aquarium at Scripps (350,000 visitors per year)

7? (OCE pending) Support for continued data acquisition


20 new cruises per year
Revise holdings with updated versions
Community input
Add new federated collections:
Seismic
Physical Oceanography

OCE 04-52068 Integrating new data, updating distributed archives and supporting community activities

8? (DIGARCH pending) Multi-Institution Digital Preservation

Extend SIO Explorer approach to WHOI
30 years of cruise data
Alvin dives
Jason ROV surveys (200 DVD per cruise)

Combination will:
Archive results of 60 new NSF awards per year
Preserve results of 1600 NSF, NOAA and ONR awards



CISE DIGARCH 04-55998
Multi-institution Testbed for Scalable Digital Archiving

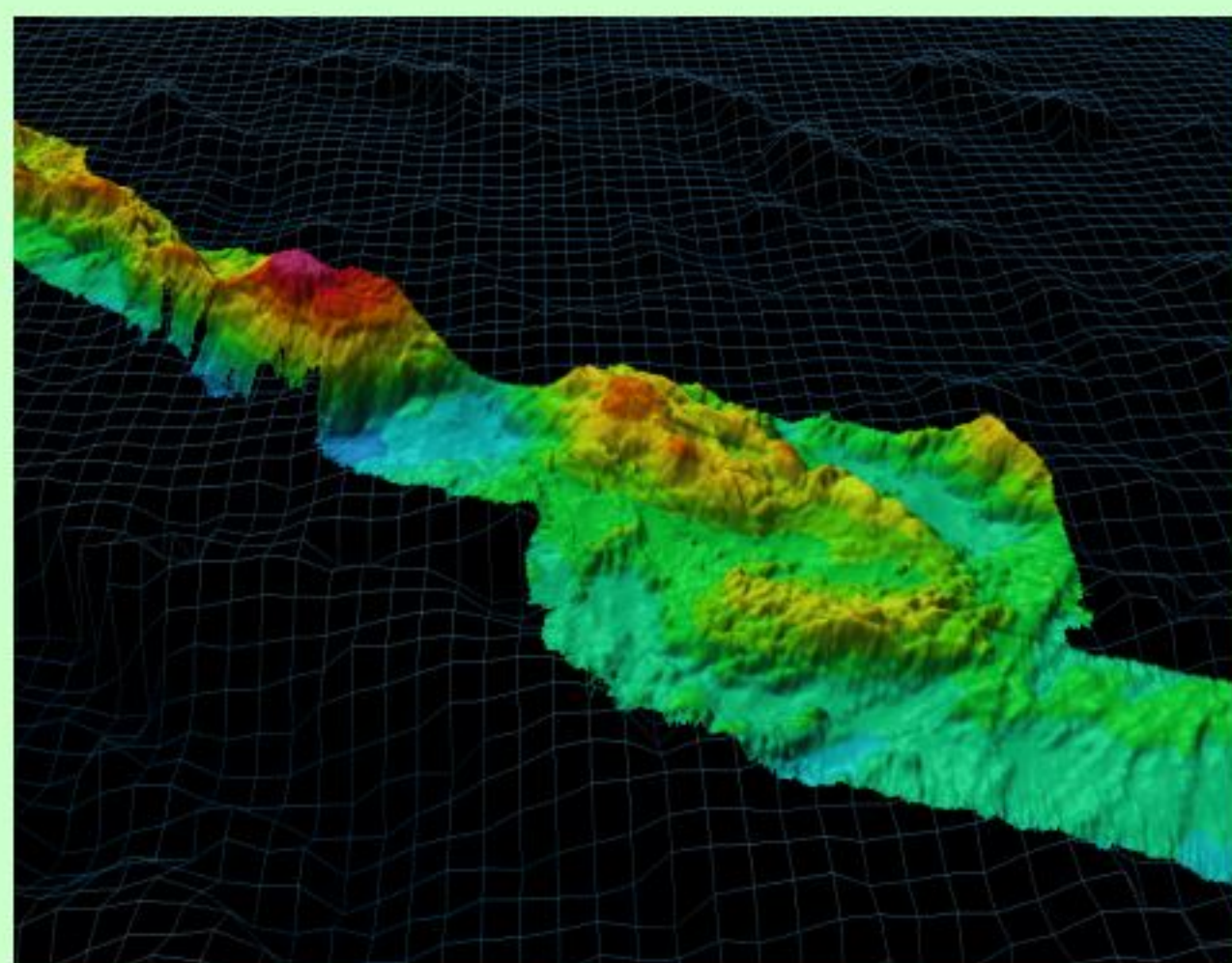
<p>Investigators and Initial Award</p> <p>PI: Brian Schottlaender, University Librarian, UCSD Co-PI's: Stephen Miller, Hubert Staudigel, Catherine Johnson, Scripps Institution of Oceanography (SIO) John Helly, San Diego Supercomputer Center (SDSC)</p> <p>NSDL Collections Track 01-21684 Bridging the Gap Between Libraries and Data Archives</p>	<p>Major Activity SIO Explorer Digital Library launched as NSDL Collections Track project three years ago, opening access to 700 cruises. Initial investment in NSDL technology augmented by NSF ITR, OCE and ATM awards. Access ~50,000 hits and 6 GB downloads each month.</p> <p>Overall growth managed by federating new collections in disciplines as needed, allowing each organization to maintain their own data practices and publishing authority.</p>	<p>Project Approach Collaboration includes researchers at SIO, computer scientists from SDSC, and archivists and librarians from UCSD Libraries.</p> <p>Metadata template file (mtf) approach allows Dublin Core and various domain-specific metadata blocks to be combined. As a controlled document, mtf enforces tight coupling between “arbitrary digital objects” and metadata. Collection building and metadata tools all work through mtf, allowing the scope of project to evolve without rewriting code.</p> <p>Java “CruiseViewer” provides graphical user interface overlaid on global maps, geographic and keyword searches, object and metadata display, and download.</p>	<p>Results Four operational collections: SIO Cruises, SIO Photo Archives, the Seamount Catalog, and Educators' Collection.</p> <p>Under construction: Rocks and Cores (10,100 samples), Seismic (27 years reflection data), Physical Oceanography (50 cruises deep acoustic current profiling).</p>	<p>Benefits to NSDL:</p> <ol style="list-style-type: none"> Broad and deep collection of marine science data, IT architecture for scalable collection building, Suite of re-usable tools for collection building, metadata management, graphical search and display. 	<p>Next steps and opportunities for collaboration Digital library technology exported to dozen other institutions in the USA and New Zealand. Proposal pending to extend to Woods Hole Oceanographic Institution for cruise data as well as submersible and ROV digital video and mapping data.</p> <p>Contact Stephen Miller, spmiller@ucsd.edu Website http://SIOExplorer.ucsd.edu</p>
--	---	--	--	--	--



4 Operational Collections

SIO Cruises

Online access to 700 cruises



Authority – Geological Data Center

SIO Archives

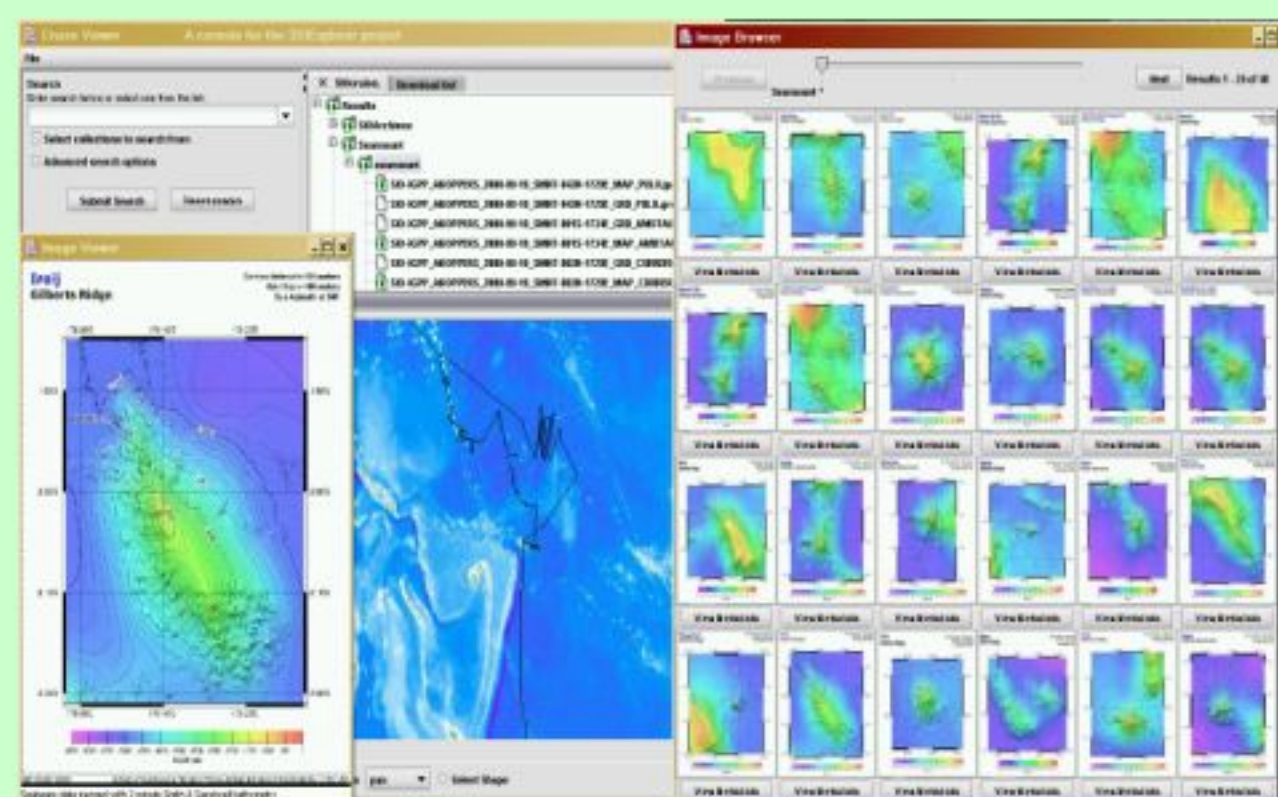
Thousands of historic photographs



Authority – UCSD Libraries

Seamounts

Detailed maps and studies of 49 seamounts



Authority – EarthRef.org

Educators

Inquiry learning resources in plate tectonics and expedition planning



Authority – ERESE



Federate 7 Independent Publishing Authorities

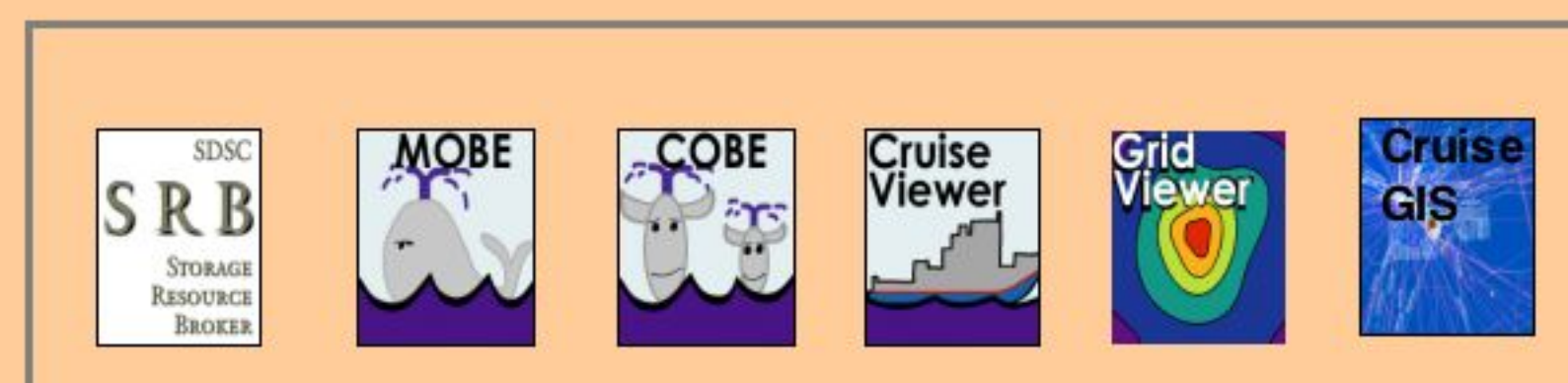
150,000 objects
500 GB



CruiseViewer Java portal into all SIO Explorer collections

Collection Builder's Toolkit

Technology is maturing, ready for other projects



Work-in-Progress: 3 Collections

Rocks and Cores

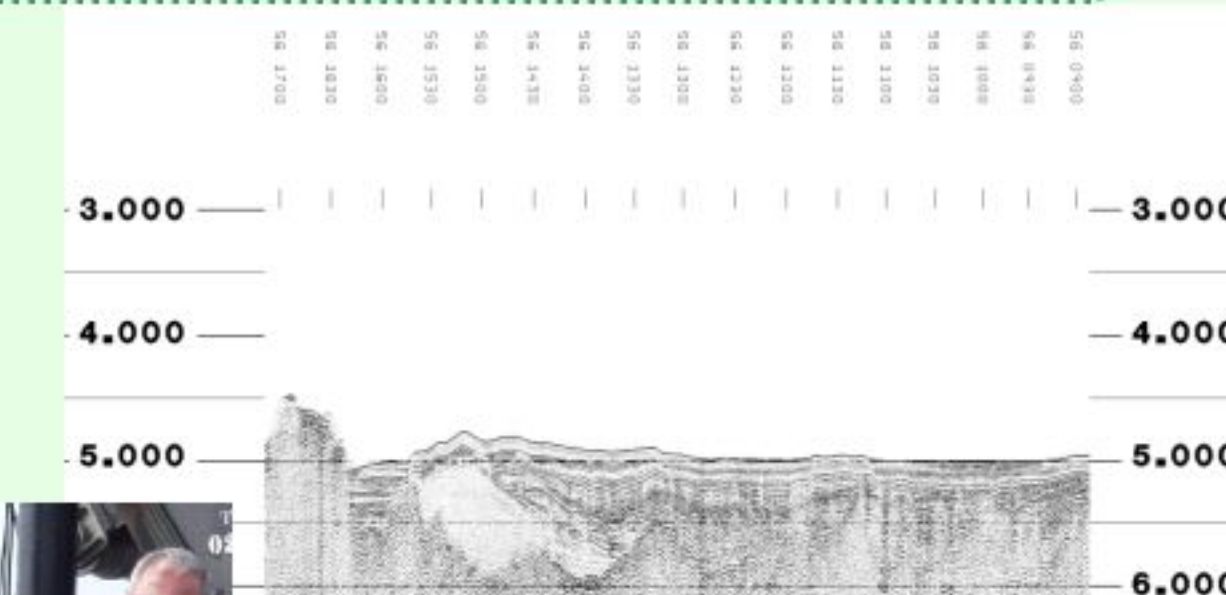
Physical samples from 10000 dredges and cores



Authority – SIO Geological Collections

Seismic

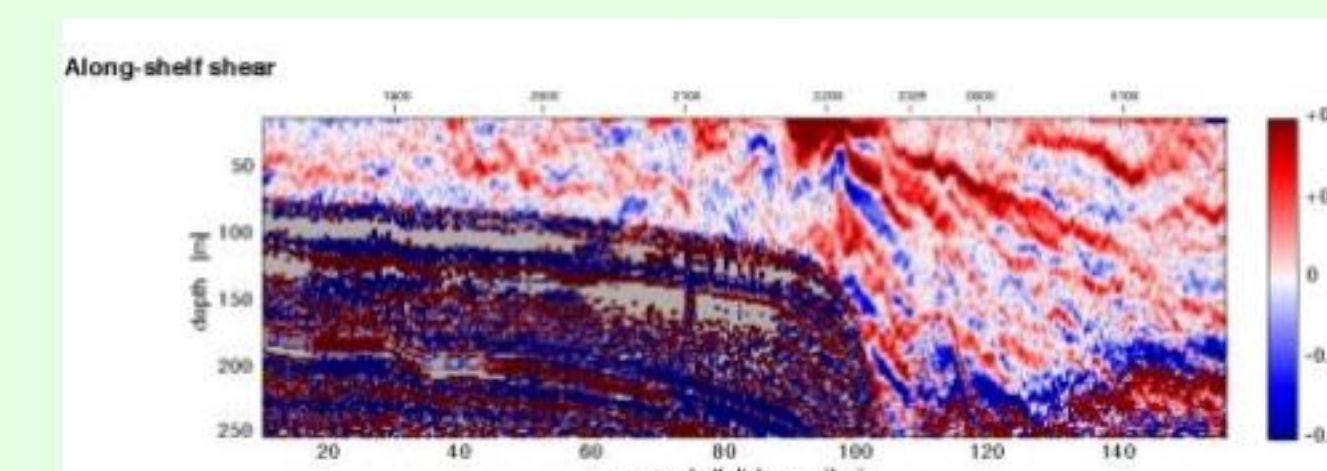
27 years of seismic reflection



Authority – SIO Seismic Reflection Archive

Physical Oceanography

50 Hydrographic Doppler Current Profiler cruises



Authority – Marine Physical Laboratory

Investigators and Initial Award

PI: Brian E. C. Schottlaender, University Librarian, UCSD
 Co-PIs: Stephen Miller, Catherine Johnson, Hubert Staudigel, Scripps Institution of Oceanography; John Helly, San Diego Supercomputer Center
 NSDL Collections Track 01-21684, Bridging the Gap between Libraries and Data Archives, with additional support from ITR, OCE, ATM and UCSD funds.
 Website <http://SIOExplorer.ucsd.edu>